



**NNRIS**  
10<sup>TH</sup> ANNIVERSARY  
SYMPOSIUM

**19 SEPT 2024** | **ACADEMIA (SGH CAMPUS),  
20 COLLEGE ROAD, SINGAPORE 169856**

Organised by:  National Neuroscience Institute  
SingHealth

Supported by:   **DukeNUS** Medical School | Neuroscience & Behavioural Disorders

 SingHealth **DukeNUS**  
ACADEMIC MEDICAL CENTRE  
**NEUROSCIENCE**

## CO-CHAIRS

**Assoc Prof LIAO Ping**  
National Neuroscience Institute

**Dr Alfred SUN**  
Duke-NUS Medical School

## INTERNATIONAL FACULTY

**Assoc Prof Zurina HASSAN**  
Universiti Sains Malaysia (USM), Malaysia

**Prof Daniel LASKOWITZ**  
Duke University School of Medicine, United States

**Prof WANG Juejin**  
Nanjing Medical University, China

**Prof George WELLMAN**  
University of Vermont, United States

## LOCAL FACULTY

**Assoc Prof AU Wing Lok**  
National Neuroscience Institute

**Dr CAO Mian**  
Duke-NUS Medical School

**Assoc Prof CHANG Hui Meng**  
National Neuroscience Institute

**Dr CHAO Yinxia**  
National Neuroscience Institute

**Dr CH'NG Toh Hean**  
Lee Kong Chian School of Medicine,  
Nanyang Technological University

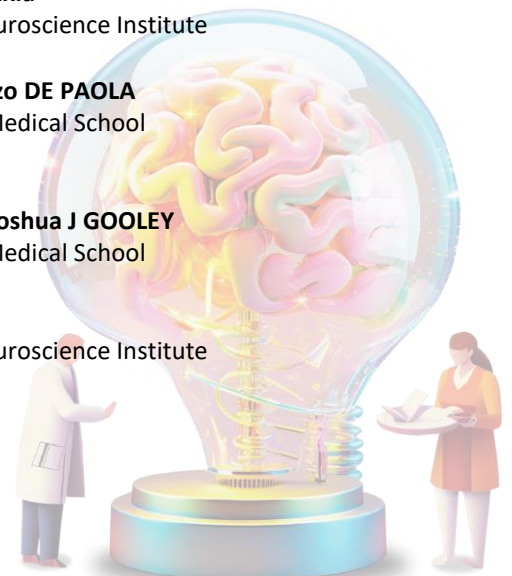
**Prof Vincenzo DE PAOLA**  
Duke-NUS Medical School

**Prof Florent GINHOUX**  
Singapore Immunology Network (SIgN), A\*STAR

**Assoc Prof Joshua J GOOLEY**  
Duke-NUS Medical School

**Prof Barry HALLIWELL**  
Yong Loo Lin School of Medicine,  
National University of Singapore

**Dr Ivy HO**  
National Neuroscience Institute



**Dr Saumya JAMUAR**  
KK Women's and Children's Hospital

**Prof LIM Kah Leong**  
Lee Kong Chian School of Medicine,  
Nanyang Technological University

**Assoc Prof David LOW**  
National Neuroscience Institute

**Assoc Prof Prakash Kumar MANHARLAL**  
National Neuroscience Institute

**Prof NG Kok Pin**  
National Neuroscience Institute

**Dr Stanislav OTT**  
Duke-NUS Medical School

**Dr Amrita ROY**  
Bio-Techne Singapore

**Prof SOONG Tuck Wah**  
National University of Singapore

**Prof TAN Eng King**  
National Neuroscience Institute

**Prof Louis TAN**  
National Neuroscience Institute

**Prof WANG Hongyan**  
Duke-NUS Medical School

**Assoc Prof YU Fengwei**  
Temasek Life Sciences Laboratory

**Prof ZHANG Su-Chun**  
Duke-NUS Medical School, Singapore

**Assoc Prof Shawn JE**  
Duke-NUS Medical School

**Dr LIN Xuling**  
National Neuroscience Institute

**Assoc Prof LU Lei**  
Nanyang Technological University

**Assoc Prof Adeline NG**  
National Neuroscience Institute

**Dr Jun NISHIYAMA**  
Duke-NUS Medical School

**Prof Sven PETERSSON**  
National Neuroscience Institute

**Prof SALVATORE Albani**  
SingHealth Translational Immunology and  
Inflammation Centre, SingHealth

**Assoc Prof SUN Ji**  
National University of Singapore

**Assoc Prof Kevin TAN**  
National Neuroscience Institute

**Dr Carol THAM**  
National Neuroscience Institute

**Dr YEO Tianrong**  
National Neuroscience Institute

**Assoc Prof ZENG Li**  
National Neuroscience Institute

**Assoc Prof Helen ZHOU**  
Yong Loo Lin School of Medicine,  
National University of Singapore



19 September 2024 (Thursday), The Ngee Ann Kongsi Auditorium

**PROGRAMME**

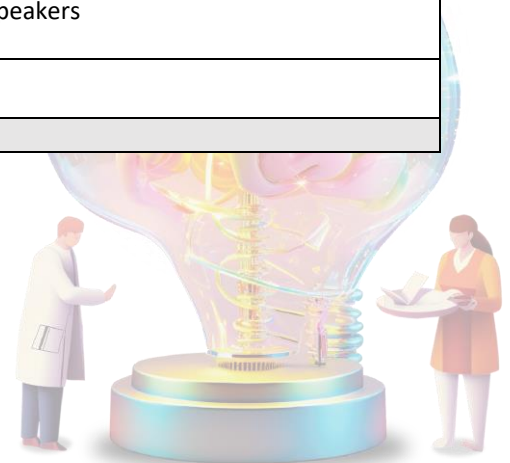
Time	Topic	Speakers
0830 – 0900	Registration	-
0900 – 0905	<b>Opening Address</b>	<b>Assoc Prof Liao Ping &amp; Dr Alfred Sun</b> Co-chairs, NNRIS 10 <sup>th</sup> Anniversary Symposium
0905 – 0915	<b>Welcome Address</b>	<b>Prof Louis Tan</b> Co-director, NNRIS Director, Research National Neuroscience Institute, Singapore
0915 – 0925	<b>Address by GOH</b> <b>Presentation of Token of Appreciation</b>	Guest-of-Honour: <b>Prof Ng Wai Hoe</b> Group Chief Executive Officer, SingHealth
<b>Plenary Session 1   Chairpersons: Assoc Prof Au Wing Lok &amp; Prof Wang Hongyan</b> <b>Room: The Ngee Ann Kongsi Auditorium</b>		
0925 – 0950	History and Vision of NNRIS	<b>Prof Tan Eng King</b> National Neuroscience Institute, Singapore
0950 – 1020	Ergothioneine: A Novel Neuroprotective Agent	<b>Prof Barry Halliwell</b> Yong Loo Lin School of Medicine, National University of Singapore, Singapore
<b>1020 – 1050</b>	<b>Tea Break</b>	
<b>Plenary Session 2   Chairpersons: Assoc Prof David Low &amp; Prof Lim Kah Leong</b> <b>Room: The Ngee Ann Kongsi Auditorium</b>		
1050 – 1120	Translation of CN-105 for Intracranial Hemorrhage	<b>Prof Daniel Laskowitz</b> Duke University School of Medicine, United States
1120 – 1150	Cell Therapy for Neurological Disorders	<b>Prof Zhang Su-Chun</b> Duke-NUS Medical School, Singapore
1150 – 1220	Mechanisms Contributing to Delayed Cerebral Ischemia Following Subarachnoid Hemorrhage	<b>Prof George Wellman</b> University of Vermont, United States
<b>1220 – 1330</b>	<b>Lunch</b>	
<b>Parallel Session 1</b>		
<b>1330 – 1510</b>	Parallel Session A, B, C	
<b>1510 – 1540</b>	<b>Tea Break</b>	
<b>Parallel Session 2</b>		
<b>1540 – 1720</b>	Parallel Session D, E, F	
<b>End of Symposium</b>		



**Parallel Session (PS) 1 – PS A, B, C**

<b>PS A: Dementia and Cognition</b>		
<b>Chairperson: Assoc Prof Ng Kok Pin &amp; Assoc Prof Joshua J Gooley</b>		
<b>Room: The Ngee Ann Kongsi Auditorium</b>		
<b>Time</b>	<b>Topic</b>	<b>Speakers</b>
1330 – 1350	Updates in Dementia Clinical Research: Biomarkers and Beyond	<b>Assoc Prof Adeline Ng</b> National Neuroscience Institute, Singapore
1350 – 1410	Brain Network Phenotype in Neurological Disorders: Prognosis, Diagnosis, and Intervention	<b>Assoc Prof Helen Zhou</b> Yong Loo Lin School of Medicine, National University of Singapore, Singapore
1410 – 1430	Creating Human and Animal Models for Neurological Disorders: Pathophysiologic Clues	<b>Assoc Prof Zeng Li</b> National Neuroscience Institute, Singapore
1430 – 1450	Nuclear Pore Dysfunction in Alzheimer's Disease	<b>Dr Ch'ng Toh Hean</b> Lee Kong Chian School of Medicine, Nanyang Technological University, Singapore
1450 – 1510	Q&A	All Speakers
<b>1510 – 1540</b>	<b>Tea Break</b>	
End of Parallel Session A		

<b>PS B: Stroke and Cerebral Vascular Diseases</b>		
<b>Chairperson: Assoc Prof Liao Ping &amp; Assoc Prof Chang Hui Meng</b>		
<b>Room: L1-S3</b>		
<b>Time</b>	<b>Topic</b>	<b>Speakers</b>
1330 – 1350	Challenges in Stroke Treatment	<b>Dr Carol Tham</b> National Neuroscience Institute, Singapore
1350 – 1410	Cav1.3 RNA Editing and its Implication in Learning and Memory	<b>Prof Soong Tuck Wah</b> National University of Singapore, Singapore
1410 – 1430	Exploring Natural Herbs for Cognitive Enhancement and Neuroplasticity in Chronic Cerebral Hypoperfusion	<b>Assoc Prof Zurina Hassan</b> Universiti Sains Malaysia (USM), Malaysia
1430 – 1450	Alternative Splicing of Cav1.2 Calcium Channel: Implications in Vascular Dysfunctions	<b>Prof Wang Juejin</b> Nanjing Medical University, China
1450 – 1510	Q&A	All Speakers
<b>1510 – 1540</b>	<b>Tea Break</b>	
End of Parallel Session B		



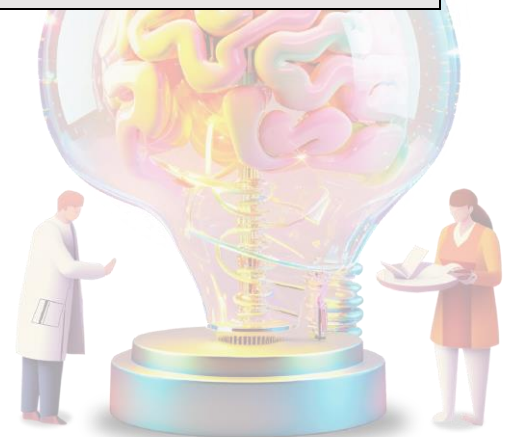
PS C: Emerging Technologies & Novel Therapies		
Chairperson: Dr Jun Nishiyama & Dr Lin Xuling		
Room: L1-S1		
Time	Topic	Speakers
1330 – 1350	Post-Synaptic Tau: Unveiling the Roles in Dendritic Spine Plasticity	<b>Dr Jun Nishiyama</b> Duke-NUS Medical School, Singapore
1350 – 1410	The Dopey1-Mon2 Complex Acts as the Kinesin-1 Adaptor for Membrane Trafficking from the Cell Center to the Peripheral	<b>Assoc Prof Lu Lei</b> Nanyang Technological University, Singapore
1410 – 1430	Inhibitory Opsins for the Analysis of Memory Retrieval	<b>Dr Stanislav Ott</b> Duke-NUS Medical School, Singapore
1430 – 1450	Diversity, Development, And Dysfunction in The Brain: Using A Multi-omics Approach to Neuroscience Research <i>*This talk is supported by SingLab Technologies.</i>	<b>Dr Amrita Roy</b> Bio-Techne Singapore, Singapore
1450 – 1510	Q&A	All Speakers
<b>1510 – 1540</b>	<b>Tea Break</b>	
End of Parallel Session C		



**Parallel Session (PS) 2 – PS D, E, F**

<b>PS D: Parkinson's Disease</b>		
<b>Chairperson: Dr Cao Mian &amp; Assoc Prof Prakash Kumar Manharlal</b>		
<b>Room: The Ngee Ann Kongsi Auditorium</b>		
<b>Time</b>	<b>Topic</b>	<b>Speakers</b>
1540 – 1600	Parkinson's Disease-specific antibodies against the Neuroprotective Co-chaperone STIP1	<b>Dr Chao Yinxia</b> National Neuroscience Institute, Singapore
1600 – 1620	Modeling Parkinson's Disease using Human Pluripotent Stem Cells	<b>Assoc Prof Shawn Je</b> Duke-NUS Medical School, Singapore
1620 – 1640	Structural Basis of LRRK2 Activation and Pharmacology	<b>Assoc Prof Sun Ji</b> National University of Singapore, Singapore
1640 – 1700	Defective Synaptic Membrane Trafficking in Parkinson's Disease	<b>Dr Cao Mian</b> Duke-NUS Medical School, Singapore
1700 – 1720	Q&A	All Speakers
End of Parallel Session D		

<b>PS E: Neuroinflammation – A Common Thread Across Neurological Diseases</b>		
<b>Chairperson: Assoc Prof Kevin Tan &amp; Prof Sven Pettersson</b>		
<b>Room: L1-S1</b>		
<b>Time</b>	<b>Topic</b>	<b>Speakers</b>
1540 – 1600	Primary CNS Inflammatory Demyelinating Diseases: An Overview and Clinco-Translational Challenges	<b>Dr Yeo Tianrong</b> National Neuroscience Institute, Singapore
1600 – 1620	High Dimensional Dissection of the Human Immunome	<b>Prof Salvatore Albani</b> SingHealth Translational Immunology and Inflammation Centre, SingHealth, Singapore
1620 – 1640	Modelling Human Microglia Functions in Development and Diseases using Induced Pluripotent Stem Cells	<b>Prof Florent Ginhoux</b> Singapore Immunology Network (SIgN), A*STAR, Singapore
1640 – 1700	Extracellular Vesicles-Mediated Targeting of Microglia/Macrophages in the Glioma Microenvironment	<b>Dr Ivy Ho</b> National Neuroscience Institute, Singapore
1700 – 1720	Q&A	All Speakers
End of Parallel Session E		



PS F: Stem Cells and Neurodevelopment		
Chairperson: Prof Wang Hongyan & Dr Alfred Sun		
Room: L1-S3		
Time	Topic	Speakers
1540 – 1600	SUREFIND-NDD: Singapore Undiagnosed Disease Research Endeavour for Identification of Novel Genetic Discoveries in Neurodevelopmental Disorders	<b>Dr Saumya Januar</b> KK Women's and Children's Hospital, Singapore
1600 – 1620	Steroid Hormone-Induced Neuronal Pruning, a Paradigm for Autism Research	<b>Assoc Prof Yu Fengwei</b> Temasek Life Sciences Laboratory, Singapore
1620 – 1640	Illuminating Human Cortical Circuit Wiring and Dysfunction in Vivo	<b>Prof Vincenzo De Paola</b> Duke-NUS Medical School, Singapore
1640 – 1700	Unravelling the Role of Microtubule Growth in Cortical Development	<b>Prof Wang Hongyan</b> Duke-NUS Medical School, Singapore
1700 – 1720	Q&A	All Speakers
End of Parallel Session F		

- Programme may be subjected to change without prior notice.

